

Smart Entry



Now it's time to make the conversion to keyless entry with the Windsor Smart Entry range.



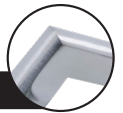
NZ 0800 607 028
sales@windsorhardware.co.nz
windsorhardware.co.nz

AUS 1800 841 643
sales@windsorhardware.com.au
windsorhardware.com.au

Windsor
ARCHITECTURAL HARDWARE



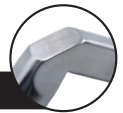
Phoenix Lever



Code	Kit	Lock
1501	Lever Set	Mortice not included
1501-30	Lever Set incl. Mortice Lock	30mm b/s
1501-35	Lever Set incl. Mortice Lock	35mm b/s
1501-45	Lever Set incl. Mortice Lock	45mm b/s
1501-60	Lever Set incl. Mortice Lock	60mm b/s



Edge Lever



Code	Kit	Lock
1513	Lever Set	Mortice not included
1513-30	Lever Set incl. Mortice Lock	30mm b/s
1513-35	Lever Set incl. Mortice Lock	35mm b/s
1513-45	Lever Set incl. Mortice Lock	45mm b/s
1513-60	Lever Set incl. Mortice Lock	60mm b/s



Phoenix Mini Lever

Mini Lever ideal for use with Pull Handles. Retrofit plates available to cover Double Turn Lock Kit marks.

Code	Kit	Lock
1512	Mini Lever Set	Mortice not included
1512-30	Mini Lever Set incl. Mortice Lock	30mm b/s
1512-35	Mini Lever Set incl. Mortice Lock	35mm b/s
1512-45	Mini Lever Set incl. Mortice Lock	45mm b/s
1512-60	Mini Lever Set incl. Mortice Lock	60mm b/s
1512-S35	Sliding Set incl. Mortice Lock	35mm b/s
1512-S35M	Sliding Set incl. Multipoint Lock	35mm b/s



Edge Mini Lever

Edge lever is ideal for use on ultra narrow stiles.

Code	Kit	Lock
1511	Mini Lever Set	Mortice not included
1511-30	Mini Lever Set incl. Mortice Lock	30mm b/s
1511-35	Mini Lever Set incl. Mortice Lock	35mm b/s
1511-45	Mini Lever Set incl. Mortice Lock	45mm b/s
1511-60	Mini Lever Set incl. Mortice Lock	60mm b/s
1511-S35	Sliding Set incl. Mortice Lock	35mm b/s
1511-S35M	Sliding Set incl. Multipoint Lock	35mm b/s

Features & Benefits

- > Five different locking options
- > Three finishes in stock; Stainless Steel, Matt Black and Graphite Nickel
- > Durable Stainless Steel base material
- > Built in doorbell
- > Easy installation and programming
- > Back up mechanical keyway
- > Low battery alert on lock and app
- > Sealed unit — water and dust tested to IP66 rating
- > Narrow design for an ultra slimline look on your door

App Functions

- > Unlock from any location using the app and Wi-Fi Bridge or via Bluetooth when nearby
- > Share pin code via text message
- > Live updates of locking history

Technical Information

- > 30–60mm backset options
- > 310mm h x 40mm w
- > Suitable for aluminium and wooden doors
- > Hinged and sliding door applications
- > Suits 35–65mm door thicknesses



Bluetooth



Card



Code



Key



Wi-Fi *



CODE: 1510

Windsor Wi-Fi Bridge*

- > Connect to your lock from anywhere
- > Manage users, functions and permissions from afar
- > Excellent for Airbnb or holiday home doors, setting and sharing temporary codes remotely
- > Connect through to your smart home system (Amazon Alexa or Google Home) for seamless integration and options for voice control

*Windsor Wi-Fi Bridge sold separately