

CUSTOM MADE SOLID WOOD DOORS

RENALL  
SOLID WOOD  
DOORS



INCLUDING  
BARN DOOR OPTIONS

interior | sheltered exterior | interior | sheltered exterior | interior | sheltered exterior | interior | sheltered exterior



FLEXIBILITY ADAPTABILITY  
NON-STANDARD  
**WIDER  
TALLER  
DOORS**

SURE WE DO STANDARD  
BUT WE DO NON-STANDARD  
**JUST AS EASILY**  
WITHOUT COST LOADING  
WITHOUT TIME PENALTY  
WE MAKE EVERY SINGLE DOOR  
**TO YOUR ORDER**  
IN INCREMENTS OF 1MM  
**SO YOU ORDER  
WHAT YOU NEED**  
NOT WHAT SOMEONE TELLS  
**YOU IS AVAILABLE**



# QUALITY PRODUCTS BUILT TO STAND THE TEST OF TIME.

**THE FIRST RENALL** solid timber door was crafted in our purpose built factory over 30 years ago. Since day one the company philosophy has remained the same: **use only the very best of renewable local and exotic timbers and employ accurate, flexible leading-edge woodworking technology to consistently construct a solid timber door that a master craftsman would be proud of.** With all essential elements milled from solid wood, to ensure **lifelong elegance and quality.**

We recognise that selecting a door design is a matter of personal choice, dependent on any number of factors. That's why, on the following pages you'll see some of our most popular designs... but it doesn't stop there. **With a Renall door you are limited only by your imagination.**

Our unique door manufacturing method means **we are able to accommodate most variations in timber, size and design.** If you select an existing Renall profile, changes to your door configuration or dimension can be achieved with little more than a few keystrokes. Now, in New Zealand, you can create an interior or exterior door exactly to your design and dimension requirements, without a penalty for cost and time.

**Woodworking craftsmanship, flexible production methods and leading-edge technology** combine to ensure yours is a custom built, solid timber door made to stand the test of time.

**Renall Doors proudly use reliable and sustainable timber sources.**

**Standard size doors** – 1980mm x 860mm. Side Lites 1980mm x 460mm.

**Non-standard door sizes** – Doors over the standard sizes above available on request.

*Additional costs incurred as a result of the client making alterations after the initial sign off/confirmation of an order will be advised as they occur and may be charged to the client in addition to the original proposal.*

*Please note – the following door illustrations are intended as a guide only.*

## GENERAL INFORMATION

- 5 year warranty.
- Glass NOT included.
- Hand select colour matching + 50%.
- Doors over 2100mm in height are not suitable to be manufactured in Radiata, therefore will not have a warranty.

## INTERIOR

- 38mm thick.
- Paint Quality doors are manufactured from Radiata.
- All interior doors supplied with beading.

## SHELTERED EXTERIOR

- 42mm thick.
- Paint Quality doors are manufactured from Tanalised Radiata.
- Only Stain Quality Sheltered Exterior doors are supplied with beading.

## DOOR EXTRAS

- Rebating (per leaf)
- Beading (per lite)
- Double Glazing Rebate + Bead (per lite)
- Split Rail – French Door
- 19mm TG&V Sheathing vs 19mm Panel (per door)
- Solid TG&V vs 19mm Panel (per door)
- Panel vs Glass
- Cross Bracing (per pair)
- Raked Head on Open Top
- Raked Head on Panel
- Stable Door
- Porthole (beaded)
- Victorian Style Panel vs Standard 19mm Panel
- Increased Component 25mm – styles (per pair)
- Increased Component 25mm – top, mid or bottom rails

*(Applies to both interior & sheltered exterior doors)*



**INTERIOR & SHELTERED EXTERIOR DOORS**



**French 6**



**French 8**



**French 9**



**French 10**



**French 12**

● Available in Paint Quality, Paint Quality Cedar, Kauri and Cedar. Rimu pricing and availability on request.



**Standard 1**



**Standard 2**



**Standard 3**



**Standard 4**

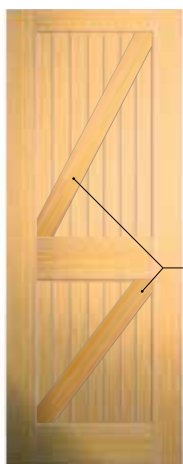


**Horizon**

● Available in Paint Quality, Paint Quality Cedar, Kauri and Cedar. Rimu pricing and availability on request.



**S5 Frame & Ledge**



Bracing available on request. See more options on page 15.



**S6 Frame & Ledge**



**Sash 42mm Cedar**

**S5 / S6 Frame & Ledge**  
Paint Quality doors made with 17.5mm V-Groove Ply (100mm increments) and Stain Quality doors made with 19mm TG&V (85mm face).

- Sash Extras**
- Glazing Bar
  - Split Rail
  - Beading per lite
  - Sash prices up to 800mm wide.

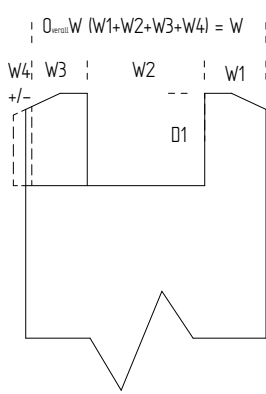
● Free double glazing rebate upgrade on the following 42mm doors: Standard 1 & 2, Summerset and Sashes.

● Available in Paint Quality, Paint Quality Cedar, Kauri and Cedar. Rimu pricing and availability on request.

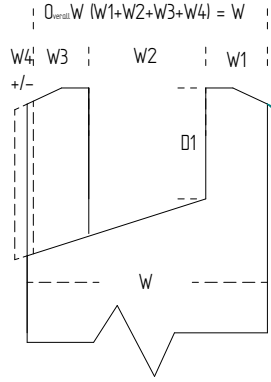


Summerset doors, see page 23.

Double glazed doors 43mm or more only available in Cedar SQ



Stile & Top Rail Detail  
(And bottom Rail Std.)



OPTIONAL  
Bottom Rail Detail

- Opt 1. Bevel with Flat (As Shown)
- Opt 2. Bevel without Flat
- Opt 3. Offset Square Shoulder

**INTERIOR DOORS**



**Victorian**



**Victorian II**



**Victorian II Glass**



**Bungalow**



**Craftsman 3**



**Craftsman 4**

• For details of our Victorian profile, please see page 24. Flat panels 9mm.

● Available in Paint Quality, Kauri and Cedar. Rimu pricing and availability on request.

• Craftsman/Bungalow – standard sizes up to 2030mm x 860mm. Flat panels 9mm.

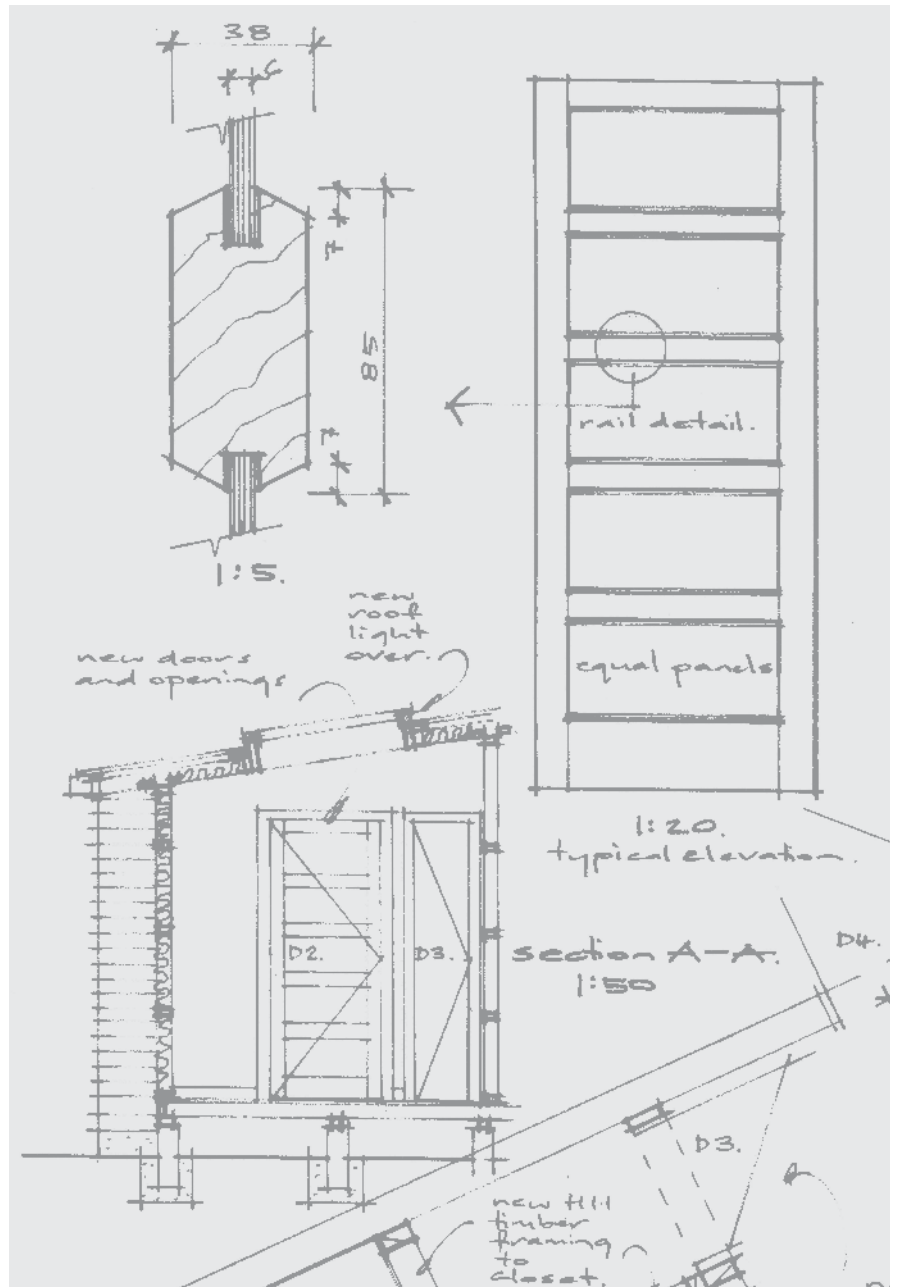
• Craftsman doors are made with a Square Shoulder profile. Bevel profile available on request.



Victorian panel detail.



Craftsman/Bungalow panel detail.



Victorian II Glass doors – with optional bigger rails.





## INTERIOR DOORS



Lansdowne I



Lansdowne I Glass



Lansdowne II



Lansdowne II Glass



Lansdowne II Lattice  
• Lattice 45° Angle.

- Available in Paint Quality, Paint Quality Cedar, Kauri and Cedar. Rimu pricing and availability on request.

- For details on the Lansdowne range mould, please see our profiles on page 24. Flat panels 9mm, or 12mm with 42mm doors only.

Lansdowne panel detail.



Lansdowne I door – with optional non-standard oversize bottom rail.

## ● INTERIOR USE

SPECIAL TIMBER, DESIGNS & SIZES AVAILABLE ON REQUEST. FREIGHT NZ WIDE IS INCLUSIVE.



**INTERIOR & SHELTERED EXTERIOR DOORS**



**Heritage 1**



**Heritage 2**



**Heritage 3**



**Heritage 3 Glass**



**Provincial 1**

● ● Available in Paint Quality, Paint Quality Cedar, Kauri and Cedar. Rimu pricing and availability on request.



**Provincial 2**



**Provincial 3**



**Provincial 4**



**Provincial 5**



**Provincial 6**

All doors in the Provincial range under 560mm in width have single panel configuration.

● ● Available in Paint Quality, Paint Quality Cedar, Kauri and Cedar. Rimu pricing and availability on request.



**Rhone**  
Sold in pairs



**Raglan**  
Sold in pairs

- Exact size of each individual leaf made to order. Hardware not included.
- Clear Radiata PQ or Cedar PQ (ie. no finger-jointed material) – PQ or Cedar PQ price + 10%.
- For details on door profiles please see page 24.

● Available in Paint Quality, Paint Quality Cedar, Kauri and Cedar. Rimu pricing and availability on request.

Provincial 2 with optional single Victorian panel.





## THE RENOVATION

A motivated owner with pride and vision transformed this sadly neglected wooden dwelling containing classic features, into a modern home designed for comfort and functional living ... with enduring qualities to last another 130 years.

Due to their functionality and aesthetics, solid timber doors shout quality longer and louder than any other joinery item in the home.

- ← Post-renovation
- ↓ Summerset
- ↙ Lansdowne I



On this project **The Renall Door Co.** supplied the following:

- *Lansdowne I* – with oversized bottom rail (ex 300mm) in widths 460mm to 1250mm;
- *Provincial 1* – single panel;
- *Traditional 2* – flat panel with *Wakelyn* mould;
- *Summerset*

Each fitting seamlessly with the original character and design.





Essential to retaining the character and soul of a home from this bygone era is to incorporate quality solid wood doors, architraves, skirtings etc. – there is just no other material of equal merit available.

← Lansdowne I  
→ Provincial 1



Working with the owners and architects, the range of doors chosen for this project from The Renall Door Co. demonstrate the functionality and benefit of choosing a quality product that delivers client's customised requirements and expectations in any configuration and size (in increments of 1mm).

← Post-renovation  
↓ Post-renovation  
↙ Lansdowne I



**INTERIOR DOORS**



**Louvre Full**  
Open or Closed



**Louvre Half**  
Open or Closed



Louvre Blade standard dimensions 31mm x 6mm set at 60° angle. Also available 50mm x 10mm blades – price on application. Open louvres 610mm and over have a carrier bead.

- Available in Paint Quality, Paint Quality Cedar, Kauri and Cedar. Rimu pricing and availability on request.



**Louvre** – Open or Closed



**Georgian**

**Over Cupboards**

Cupboard Doors – Prices cover widths up to 860mm. Georgian 18mm Raised & Fielded Panels.

- Available in Paint Quality, Paint Quality Cedar, Kauri and Cedar. Rimu pricing and availability on request.



**Sirocco**

Sirocco Shutter – Prices cover widths up to 610mm. 31mm x 6mm bull nose blades set at 60° angle. Doors over 1200mm high have a midrail. Only available in open louvre.

- Available in Paint Quality, Paint Quality Cedar, Kauri and Cedar. Rimu pricing and availability on request.



**Mistral**

Mistral Shutter – Prices cover widths up to 610mm. 65mm x 10mm vertical blades set at 45° angle. Only available in open louvre.

- Available in Cedar only.



# THE BARN DOOR:

## INSPIRED BY EARLY AGRICULTURAL BUILDING CRAFTSMEN

Adding a Renall Barn Door can add character and style to any room. These doors can have aesthetic benefits whilst providing functionality.

Requiring only wall space, the sliding Barn Door can provide more space economy where as a traditional swinging door requires 2-3 meters of clear swing space.

The timber Barn Door can be customised to not only look good but to create the desired sense of style – ranging from a rustic traditional wood look to a more streamlined painted feature door for a contemporary home.

- Solid timber to add value to your home
- Constructed of high quality timber that has been kiln-dried and moisture-tested
- 38-42mm thick for maximum strength and rigity
- All doors can be made to measure – we cater to customised designs and sizing
- Can be painted or stained
- Hardware by others.

Interior – Square Shoulder profile  
 Exterior – Sash profile  
 Interior – Paint Quality – Grooved 12mm MDF  
 Exterior – Paint Quality – V Groove Ply, Stain Quality – TG & V

- Available in Stain Quality and Paint Quality, Paint Quality Cedar, Kauri and Cedar. Rimu pricing and availability on request.



Barn 2

Bracing alternatives available on request.



Barn 1



Barn 3



Barn 4



Barn 5



Barn 6

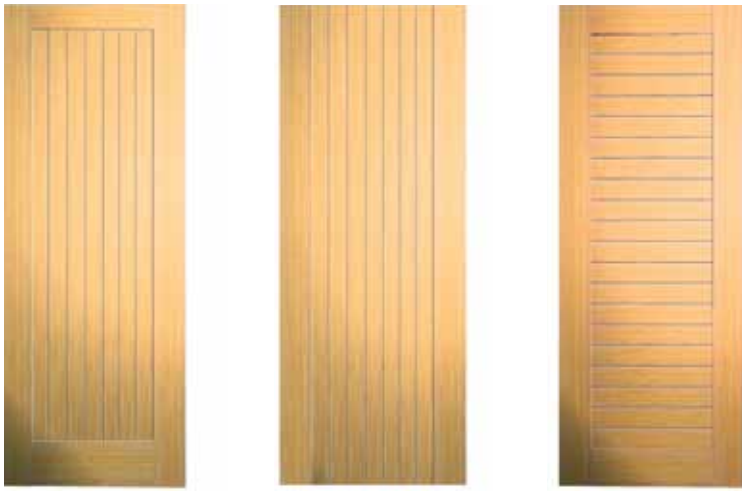


Barn 7

● INTERIOR USE ● SHELTERED EXTERIOR USE

SPECIAL TIMBER, DESIGNS & SIZES AVAILABLE ON REQUEST. FREIGHT NZ WIDE IS INCLUSIVE.

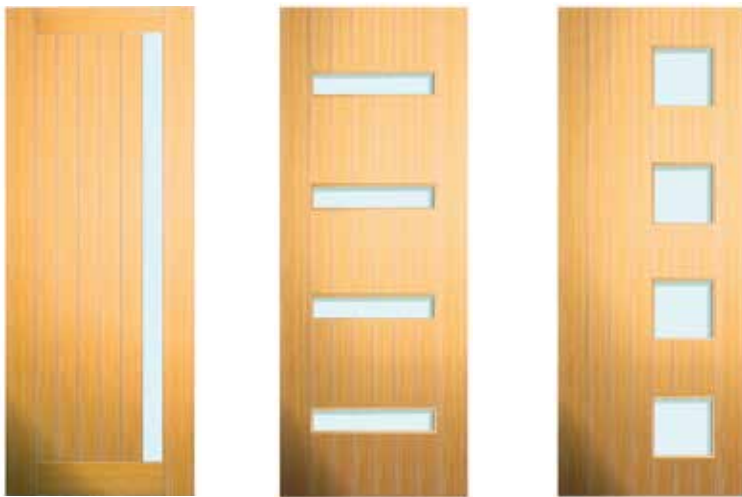
SHELTERED EXTERIOR DOORS



Solid                      Fullboard Pipe                      Solid Horizontal

- Solid and Fullboard Pipe – available in Paint Quality Cedar, Cedar and Kwila.  
Solid Horizontal – available in Paint Quality Cedar and Cedar.

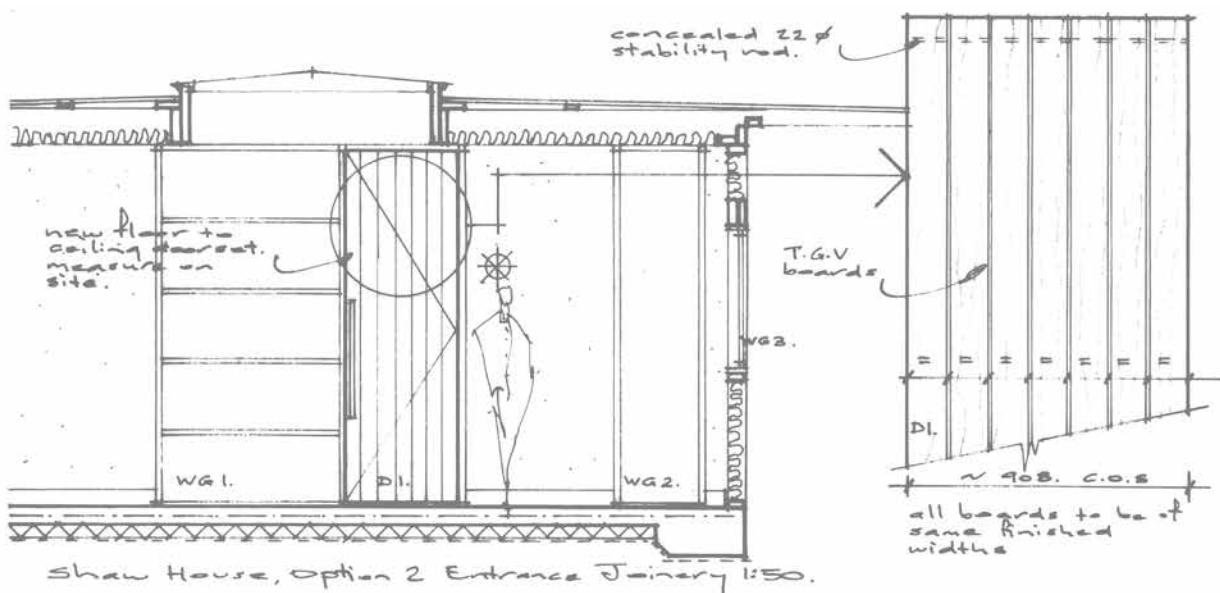
# DESIGN A MATTER OF PERSONAL CHOICE



Solid V Lite                      Quattro                      Vista

- Not available in Pine.
- Solid & Fullboard doors – stile widths vary to accommodate door width. For wider, narrower or even width TG&V – price on request.
- Fullboard doors contain 2 x 22mm diameter galvanised steel pipes 80mm from top & bottom. Doors over 2100mm high have extra pipe at midpoint.
- Vision panel size and quantity can be specified to suit individual requirements.
- For details of our TG&V profile, please see page 24.

- Available in Paint Quality Cedar, Cedar and Kwila.



Shaw House, Option 2 Entrance Joinery 1:50.

Solid Horizontal doors.





**THE NAUTICA DOOR:  
INSPIRED BY EARLY SHIP BUILDING CRAFTSMEN**

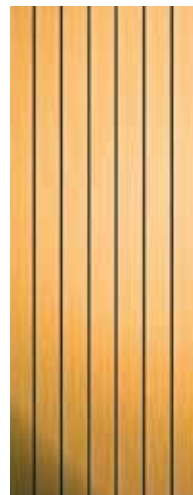
Here is a Renall door with a difference... and a solid marine heritage. Designed to suit both traditional and contemporary architecture, the Renall Nautica door is guaranteed to enhance any entranceway.

The unique aesthetics of the Nautica are based on the traditional waterproofing method developed by early ship builders. For centuries the ship building industry utilised a combination of tar and rope to seal the gaps between the timber on the hull and decks of sailing ships. As well as helping keep the craft afloat the tar and rope system provided excellent flexibility between the planks. Today, this traditional effect is more commonly seen on the deck of a luxury yacht where, beyond aesthetics, it still offers the owner waterproofing and flexibility.

The Renall design team adapted this unique look and applied it to our single most popular door, the Cedar tongue and groove with V (TG & V). Both the standard and Nautica TG & V are available with or without top and bottom rails. Of course the Nautica has the added advantage of having perfectly waterproof joints between the solid timber planks. The gap-sealing compound used on the Nautica is extremely flexible and virtually indestructible.

To further authenticate your Nautica door we offer to insert decorative wooden plugs adjacent to the corners replicating the original ship building practice of securing planks to the ships framework. And like all Renall doors we can customise the size to suit your requirements.

Please note that we still recommend sealing the Nautica just like any other solid timber door in our entrance door range.



**Nautica**

- Available in Cedar, Kwila and Oak.

Decorative wooden plugs available.





Traditional 1



Traditional 2



Traditional 3



Traditional 4



Traditional 5

- Available in Paint Quality, Paint Quality Cedar, Kauri and Cedar. Rimu pricing and availability on request.



Traditional 6



Traditional 7

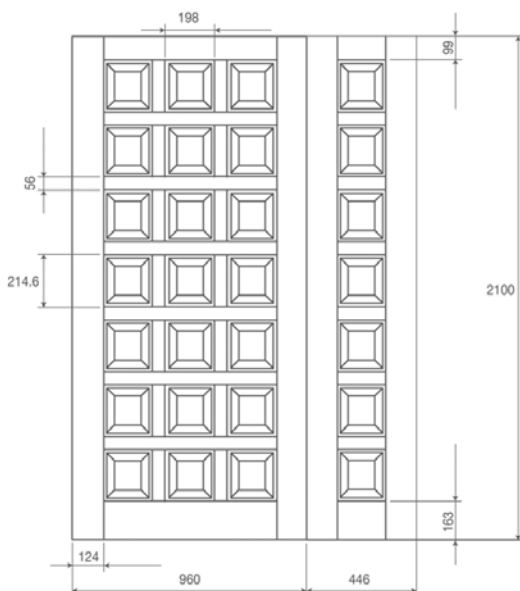


Traditional 7 Lite



Glenbrae

- Available in Paint Quality, Paint Quality Cedar, Kauri and Cedar. Rimu pricing and availability on request.



- Traditional 7 / Traditional 7 Lite – 1980mm x 860mm = 18 panels/lites. For 21 panels/lites we recommend this door to be over 2100mm x 910mm to keep panels approximately square.
- The illustration is an example of the Traditional 7 door & side panel dimensions.
- For details of the Traditional profile see page 24.

*Please note - this door illustration is intended as a guide only, actual component sizes may vary as a consequence with changes in the overall dimensions of the door.*





Wakelyn



Arizona



Colonial 6



Colonial 7

● ● Available in Paint Quality, Paint Quality Cedar, Kauri and Cedar. Rimu pricing and availability on request. Can be made for interior use.



Colonial 10



Arch Side Lite

● ● Available in Paint Quality, Paint Quality Cedar, Kauri and Cedar. Rimu pricing and availability on request. Can be made for interior use.



Colonial 11



Std Side Lite

● ● Available in Paint Quality, Paint Quality Cedar, Kauri and Cedar. Rimu pricing and availability on request. Can be made for interior use.



Provincial 1 Special – Wakelyn mould panel.

Wakelyn door. For details of Wakelyn mould, see profiles on page 24.

● SHELTERED EXTERIOR USE ● INTERIOR USE

SPECIAL TIMBER, DESIGNS & SIZES AVAILABLE ON REQUEST. FREIGHT NZ WIDE IS INCLUSIVE.

## SHELTERED EXTERIOR DOORS

### PREMIUM QUALITY MARTONDALE ENTRANCE DOORS

A grand entrance door speaks volumes about the home owner and their lifestyle – contemporary or traditional. There is no mistaking the premium quality imbued in every Martondale solid wood entrance door.

Slightly heavier components, a simple double-sided, angle edged frame profile and solid-look panelling with unique panel profiles complete the Martondale range. Reflecting its European heritage the Martondale is available in paint quality and Western Red Cedar.



Bolton entrance door in Kauri.



SHELTERED EXTERIOR DOORS



Blair



Blair GT



Bolton



Durham



Rising

• Standard 42mm thick for exterior use.

• Can be supplied 38mm thick for interior use.

● ● Available in Paint Quality, Paint Quality Cedar and Cedar. Rimu pricing and availability on request.



York



Oxford



Summerset



Kew



Chelsea

• Standard 42mm thick for exterior use.

• Can be supplied 38mm thick for interior use.

● ● Available in Paint Quality, Paint Quality Cedar and Cedar. Rimu pricing and availability on request.



Lumley



Mayfair



Whitehall



Blair GT  
Side Lite



York  
Side Lite



Lumley  
Side Lite



Whitehall  
Side Lite

• Standard 42mm thick for exterior use.

• Can be supplied 38mm thick for interior use.

● ● Available in Paint Quality, Paint Quality Cedar and Cedar. Rimu pricing and availability on request.

● SHELTERED EXTERIOR USE ● INTERIOR USE ● FREE DOUBLE GLAZING REBATE UPGRADE (42mm)

SPECIAL TIMBER, DESIGNS & SIZES AVAILABLE ON REQUEST. FREIGHT NZ WIDE IS INCLUSIVE.

**DOOR PROFILES**


The following illustrations display our standard edge and panel profiles.

We are able to offer several bolection and edge profiles on special request over and above those shown.

If you have requirements outside this standard range, please contact our office for more information.



**Martondale**

			
<b>Provincial Interior</b>	<b>Lansdowne</b>	<b>Victorian</b>	
			
<b>Traditional</b>	<b>Wakelyn Top</b>	<b>Wakelyn Bottom</b>	
			
<b>Renall Jointing System</b>	<b>TG&amp;V - 42mm and 38mm</b>	<b>Glazing Bar Detail</b>	
			
<b>Traditional Double Glazed</b>	<b>Sash Double Glazed</b>	<b>Sash 42mm Exterior</b>	<b>Provincial Interior Beaded For Glass</b>
			
<b>Large Open Louvre 50mm x 10mm Blade</b>	<b>Standard Open Louvre 31mm x 6mm Blade</b>	<b>Large Closed Louvre</b>	<b>Standard Closed Louvre</b>

## THE CARE AND HANDLING OF RENALL SOLID WOOD DOORS

Renall craftsmen have built solid wood doors for over 30 years. We only use the very best timber available and consistently produce affordable, quality doors that will stand the test of time. To ensure you maximise your door investment just follow these simple instructions:

1. Entrance doors are designed for use in weather protected situations only and should not be subjected to driving rain or long periods of direct sunlight. A porch or substantial overhang should protect the doors.
2. Handle the door carefully. It is like any piece of wooden furniture; careless handling will damage the surface. Handle with clean hands or gloves and do not drag doors across one another or across other surfaces.
3. Doors should be stored in a dry well ventilated area, not subjected to extremes of humidity or temperature, nor direct sunlight. The timber in the door has been dried to moisture content of 12-15% before manufacture. If conditions are such as to cause the moisture to move outside this range some shrinkage or swelling may take place. The inserted panels are set freely in the door to allow movement as moisture content changes.
4. Before hanging the door, it will need a final sand with fine, 240 grit sandpaper. If staining the door apply the stain at this stage. Seal all surfaces with the first priming or sealing coat. Then apply the second coat. It is important at this stage to seal the door completely taking particular care with the top and bottom edges. Doors may discolour or become cracked if subjected to sunlight prior to painting or varnishing, and will discolour if subjected to rain spotting.
5. Hanging the door.

Use three hinges. Locate the top hinge approximately 150mm from the top of the door, the middle hinge in the centre and bottom hinge approximately 200mm from the bottom of the door. Hinges should be of brass, stainless or galvanised steel with screws of the same metal.

6. Finishing the door.

You must use exterior paints or marine varnishes and carefully follow the coating manufacturer's recommendations. Do not use any stain or oil on its own without finally sealing with varnish/polyurethane.

When painting a 4 coat system should be used (a primer, undercoat and two topcoats).

When clear finishing a 3 or 4 coat system should be used. The door should be inspected regularly to determine the condition of the varnish and recoated if necessary. Clear finishes require more maintenance than paint finishes. The features of native and exotic timbers are best brought out by a clear satin finish.

The more sunlight the door is exposed to, the lighter the colour used must be. Dark coloured or dark stained doors exposed to sunlight may reach an internal temperature of 20-25 degrees higher than a white painted door, with consequent higher likelihood to shrink or crack.

## DAMAGE CLAIMS & RETURNS POLICY

In the interests of defining who carries responsibility for goods, our procedure for handling freight damage and returns are set out as follows:

1. Every door we build is first created as a computer file, a copy of which is faxed for inspection to each customer. Goods will not be considered for return without charge if they match this Order Confirmation and the goods are not damaged.

It is the Customers responsibility to make sure that they receive an order confirmation within a reasonable timeframe (24 hours) and to check it for accuracy.

**\* Please note, in an effort to minimise production time door/s may continue to proceed through the factory without a confirmation signature, therefore please ensure order is checked immediately.**

2. All Claims for goods damaged in transit must be made to the Company within 7 days of delivery and signed damaged on the delivery docket retained by the driver at the time the goods are unloaded.
3. Freight damage claims where the goods have been signed for 'Subject to Inspection' will not be accepted – any damage **must** be specifically noted on the delivery docket at the time the goods are unloaded from the truck.

4. All doors must be sealed correctly as per instructions from the Care and Handling flyer received with each door package. The sealant and polyurethane/paint (compliant to manufacturer's standards) must be placed on the doors 6 faces immediately or the door/s warranty will become void and will not be accepted as a claim.

5. **Any structural modification of The Renall Door Company Limited products will void warranty.**

All claims and queries on damage issues should be directed to our Customer Service team on phone 0800 80 80 66, or fax 0800 80 70 79.

## COLOUR MATCHING POLICY

1. All timber has natural variations in colour and grain patterns.
2. Our normal colour matching policy is to work with the resource we have and continually strive for perfection.
3. Even within this policy, some colour variations will be allowed.
4. If you would rather not have anything but the smallest variation in the grain or colour of your door we suggest hand selection of each board before manufacture. The cost for this service is an additional 25% for each door.
5. Without requesting the 'hand select' option at the time of ordering, doors will not be accepted for credit or replacement for colour matching issues.

## 10 IMPORTANT ISSUES FOR THE SATISFACTORY USE OF TIMBER DOORS

1. Coat all sides, including the top and bottom, to the paint/varnish manufacturers recommendation immediately.
2. Do not use any stain or oil on its own without finally sealing with varnish or polyurethane. On exterior doors use only oil based paint or marine grade varnish or polyurethane. The use of 2 Pot paint is not recommended on solid timber products.
3. If you choose to ignore these recommendations, the warranty is void.
4. Interior doors should be coated with enamel or standard polyurethane finishes including the tops and bottoms.
5. Dark colour use for doors which see direct sun could cause the timber and joints to crack.
6. If 'shelter only' doors are exposed to driving rain or direct sun, the warranty is void.
7. Variations in colour and grain are a natural outcome of this product and is not considered a defect, see policy above.
8. Timber is a natural product which will expand and shrink with exposure to variations of temperature and moisture.
9. Strict adherence to the above sealing and sitting rules will minimise, but not eliminate, both these issues.
10. Doors are pieces of fine furniture that will need regular ongoing maintenance.

This product will comply with all requirements of the New Zealand Building Code and Consumer Guarantees Act, but only if the above conditions and recommendations are followed.



Phone: 0800 808 066  
Fax: 0800 807 079  
Email: [sales@renalldoors.co.nz](mailto:sales@renalldoors.co.nz)  
[www.renalldoors.co.nz](http://www.renalldoors.co.nz)

PHONE 0800 808 066  
[www.renalldoors.co.nz](http://www.renalldoors.co.nz)



**RENALL**

CUSTOM MADE SOLID WOOD DOORS

101 BROOKLYN RD | CARTERTON 5713  
PHONE: 06 379 8066 | FAX: 06 379 7079  
EMAIL: [sales@renalldoors.co.nz](mailto:sales@renalldoors.co.nz)

[www.renalldoors.co.nz](http://www.renalldoors.co.nz)